

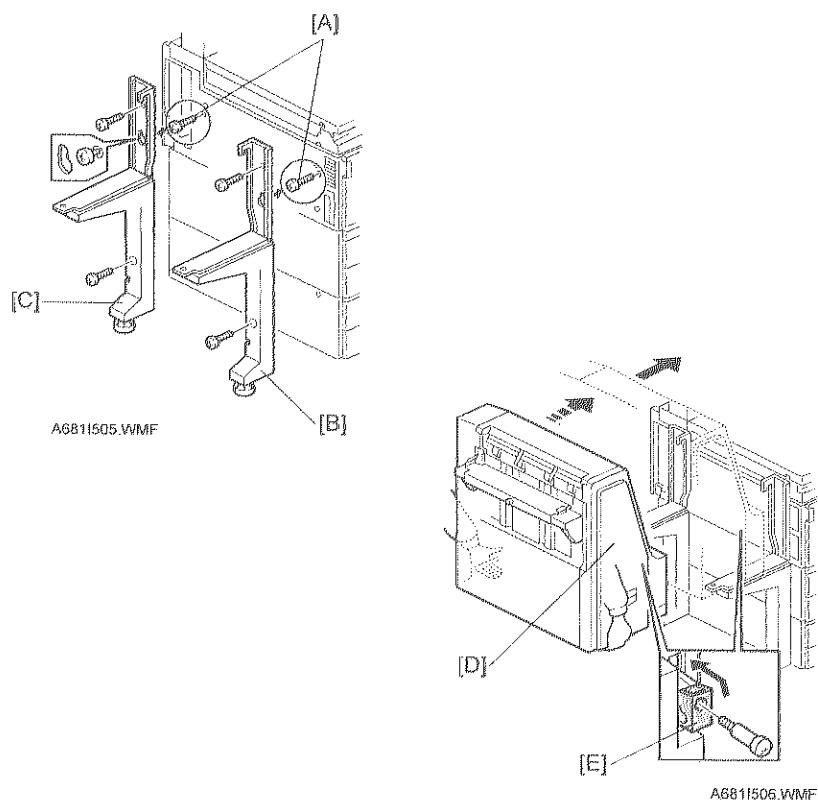
INSTALLATION PROCEDURE

1,000-SHEET FINISHER (Machine Code: A681)

INSTALLATION PROCEDURE For Machine Code: A230/A231/A232/A265/A267/A283/A284/ B003/B004/B006/B007 Copiers and G035/G038 /G062 Printers

NOTE: THE FINISHER MUST BE INSTALLED BY A CUSTOMER SERVICE REPRESENTATIVE WHO HAS COMPLETED THE TRAINING COURSES ON THE BASE MACHINE AND THE FINISHER.

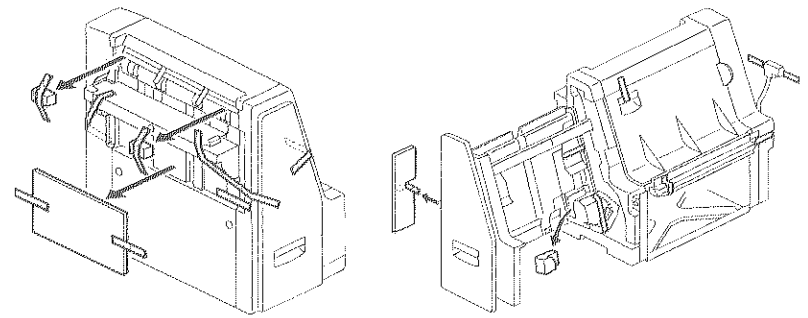
A6818610E
Printed in Japan



- A230/A231/A232/A283/A284/B003/B004/B006/B007 copiers and G035 printer -

2. Install two screws [A] loosely.
3. Hang the front stand [B] and rear stand [C] on the screws which were installed in step 2.
4. Secure the front and rear stands (6 screws, including the two screws [A]).
5. Pull out the stapler unit [D].
6. Draw out the locking lever [E] (1 screw).
7. Align the finisher on the stands, and lock it in place by pushing the locking lever.
8. Secure the locking lever (1 screw) and push the stapler unit into the finisher.

2



A681503.WMF

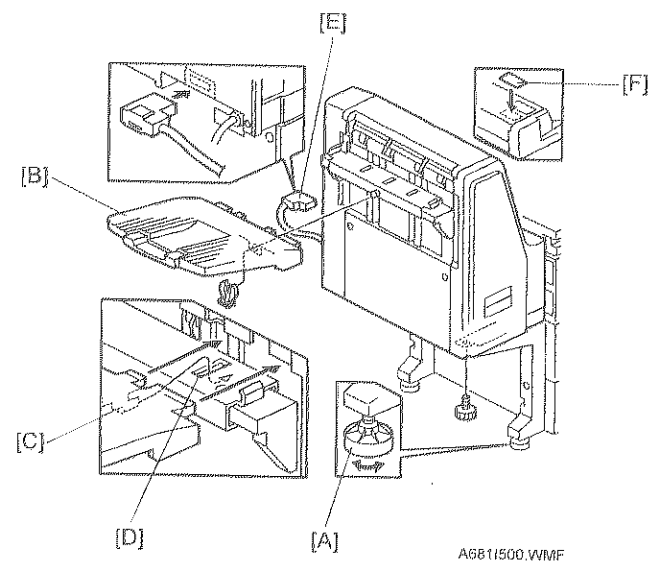
A681504.WMF

CAUTION
Unplug the main machine power cord before starting the following procedure.

- NOTE:**
- 1) If this finisher will be installed on the A230, A231, A232, A283, or A284 copier, the following options must be installed before installing this finisher.
 - Bridge Unit (A688)
 - Paper Tray Unit (A682)
 - 2) If this finisher will be installed on the A265 or A267 copier or G038 printer, the following options must be installed before installing this finisher.
 - Bridge Unit (A897)
 - Paper Tray Unit (A860) or LCT (A862)
 - 3) If this finisher will be installed on the G035 printer, the following options should be installed.
 - Bridge Unit (A688)
 - Paper Tray Unit (G520)
 - 4) If this finisher will be installed on the G062 printer, the following options must be installed before installing this finisher.
 - Bridge Unit (G583)
 - Paper Tray Unit (A860) or LCT (A862)
 - 5) If this finisher will be installed on the B003, B004, B006 or B007 copier, the following options must be installed before installing this finisher.
 - Bridge Unit (B397)
 - Paper Tray Unit (A682)

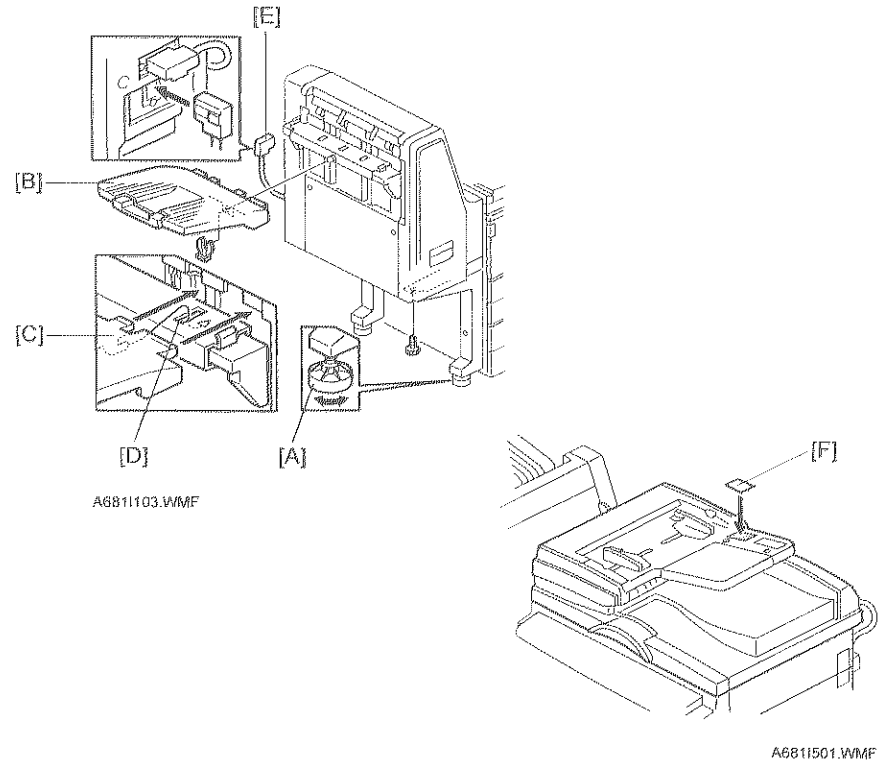
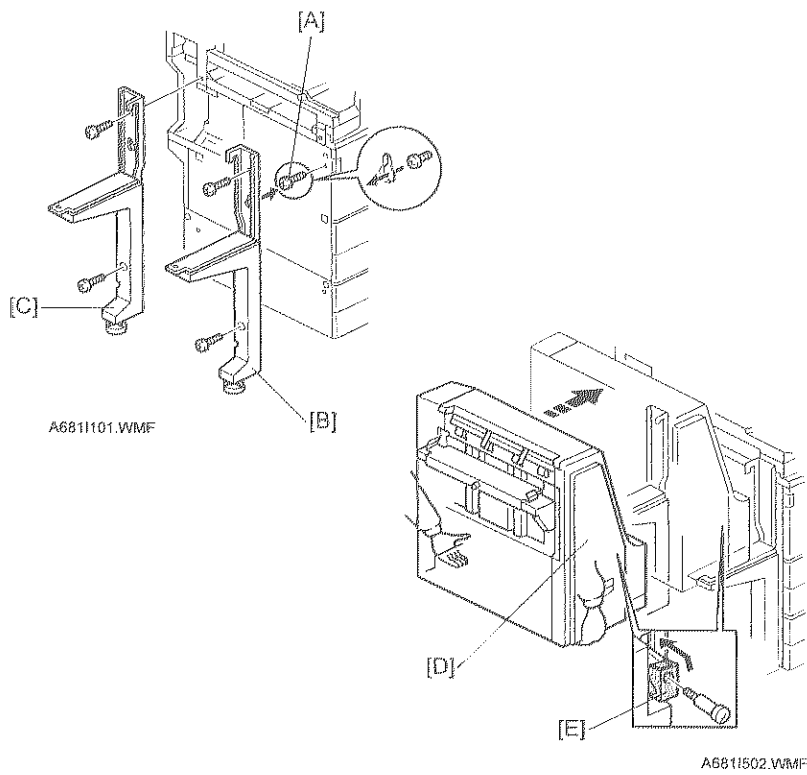
1. Unpack the finisher and remove the tapes.

1



9. Secure the finisher (1 screw).
10. Adjust the securing knobs [A] under the front and rear stand until the finisher is perpendicular to the floor.
11. Install the shift tray [B] (1 snap ring).
NOTE: Make sure that the three pegs [C] fit into the slots [D] properly.
12. Connect the finisher cable [E] to the main machine.
13. **A230/A231/A232/A283/A284 copiers only:**
Attach the staple position decal [F] to the ARDF as shown.
14. Turn on the ac switch and check the finisher operation.

3



- A265/A267 copiers and G038/G062 printers -

2. Install screw [A] loosely.
3. Hang the front stand [B] on the screw which was installed in step 2.
4. Secure the front stand (3 screws, including screw [A]).
5. Install the rear stand [C] (2 screws).
6. Pull out the stapler unit [D].
7. Draw out the locking lever [E] (1 screw).
8. Align the finisher on the stands, and lock it in place by pushing the locking lever.
9. Secure the locking lever (1 screw) and push the stapler unit into the finisher.

10. Secure the finisher (1 screw).

11. Adjust the securing knobs [A] under the front and rear stand until the finisher is perpendicular to the floor.

12. Install the shift tray [B] (1 snap ring).

13. Make sure that the three pegs [C] fit into the slots [D] properly.

14. Connect the finisher cable [E] to the optional bridge unit.

15. **A265/A267 copiers only:**

Attach the staple position decal [F] to the ARDF as shown.

16. Turn on the main power switch and check the finisher operation.